

Camp Cilca

Central Illinois Lutheran Camp Association

1:7500 Scale

5 meter Contours

copyright 2000, Central Illinois Orienteering

magnetic north as of 1999

basemap: USGS and aerial photos

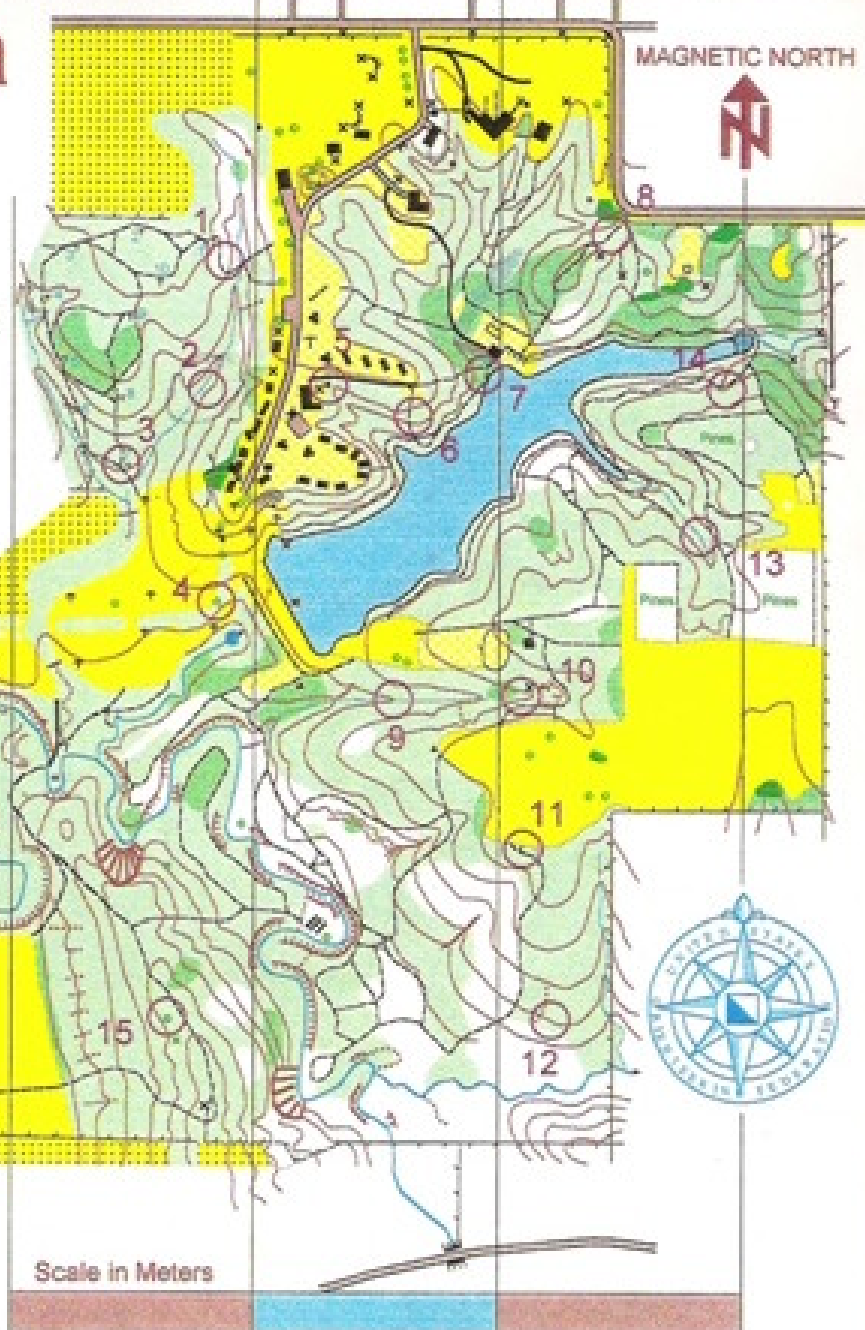
fieldwork: Mike Minium (1999)

cartography: Mike Minium using OCAD 5.0

Permanent Course

- 1 Next to path
- 2 E side of ravine
- 3 Path junction
- 4 Large oak
- 5 Pump house
- 6 Side of hill
- 7 Pine stand
- 8 Path near road
- 9 Reentrant
- 10 Reentrant
- 11 Trail / field edge
- 12 Hillside
- 13 Reentrant
- 14 Near path
- 15 Near large tree

This map has been produced with assistance from the United States Orienteering Federation with the purpose of promoting orienteering in America. Funding has also been provided by the Sangamon Regional Office of Education.



LEGEND

- contour line
- form line
- knoll, small knoll
- depression, small depression
- pit
- dry ditch, erosion gully
- earth bank
- cliff, culvert
- boulder, rock pile
- bell tower, flag pole
- prayer trail, frisbee golf course
- other manmade object
- distinct vegetation boundary
- distinct single tree, rootstock

- | | |
|--|-------------------------------|
| | cultivated land (private) |
| | open land (mowed) |
| | rough open (unmowed) |
| | open / rough with some trees |
| | open forest (fast running) |
| | thicker forest |
| | lake, uncrossable marsh |
| | marsh, pond |
| | stream, seasonal stream |
| | uncrossable river |
| | road, minor road |
| | footpath |
| | fence, ruined fence, backstop |
| | building, ruined building |

for information about
Orienteering:

Central Illinois Orienteering
P O Box 7514
Springfield IL 62791
(217) 787-3816

or
United States Orienteering
P O Box 1444
Forest Park GA 30298
(404) 363-2110

www.us.orienteering.org